

Webster Groves



SSD FAST FACTS

Special School District of St. Louis County (SSD) has two distinct functions – it provides special education services for all St. Louis County students with disabilities, and it provides technical education for area high school students.

■ **One in six public school students** in St. Louis County receive special education services or technical education from SSD.

■ SSD staff provide special education services to students in **265 public schools** in **22 school districts** in St. Louis County.

■ **Ninety-seven percent** of the students who receive special education from SSD attend a school in their local school district.

■ SSD provides special education services to **all St. Louis County students with disabilities**, including those who attend private, parochial and independent schools, those who are home-schooled and those who are homebound for medical or other reasons.

■ SSD's unique status as a public school district with its own tax base ensures that students in St. Louis County receive **equal access to quality special education** regardless of their socio-economic background or the neighborhood in which they live.



SSD MISSION

In collaboration with partner districts, we provide technical education and a wide variety of individualized educational and support services, designed to ensure the student's successful contribution to our community.

SSD VISION

Partners for every student's success.

SSD CORE VALUES

Student Success
Collaboration
Integrity
Stewardship
Continuous Improvement
Equity



www.ssdmo.org



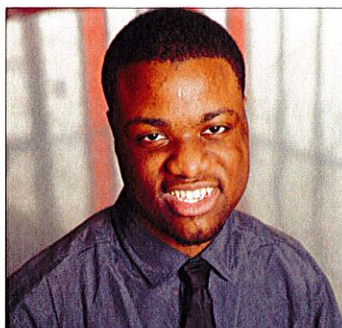
facebook.com/SSDStLCo

STUDENTS 2015-2016

Students receiving special education 22,688
Students in technical education 1,619

STAFF 2015-2016

Teacher-level staff 2,648
Para-level staff 1,848
Other 750



TEACHER QUALIFICATIONS

Average experience –
professional staff 13 years
Professional staff with
advanced degrees 77%

DISTRICT OVERVIEW

Special School District (SSD) of St. Louis County was formed in December 1957 after St. Louis County voters approved a referendum establishing a countywide local school district to support the educational needs of children with disabilities. The District is unique in that:

- The referendum also established a separate tax levy to fund the District; and
- This progressive approach to educating children with disabilities was put in place more than 17 years before the federal Individuals with Disabilities Education Act (IDEA) was enacted in 1975 by Congress mandating that children with disabilities have the right to a free appropriate public education.



The scope of the District's services is enormous. Today SSD provides services to more than 24,000 students — or one out of six public school students in St. Louis County — and SSD staff work in more than 265 schools throughout St. Louis County. With a geographic reach of more than 510 square miles, SSD impacts the lives of more students over a wider area than any other school district in the county.

SPECIAL EDUCATION

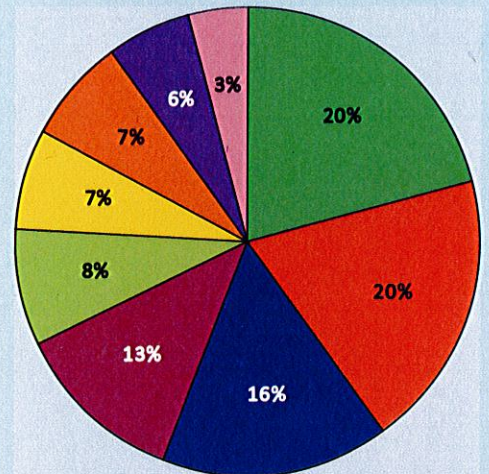
The vast majority of SSD's special education students — some 97 percent — attend the same neighborhood school that their non-disabled peers attend. This means SSD brings the necessary special education services to the students rather than the reverse. The result is an inclusive educational environment in which both disabled and non-disabled students benefit from interaction and friendship with one another. About 750 students with more significant disabilities are educated in one of the District's five special education schools. SSD also provides a variety of related services to students with special needs.



TECHNICAL EDUCATION

SSD operates two technical high schools — North Technical High School in Florissant and South Technical High School in Sunset Hills — that offer more than 30 career and technical education programs for high school students throughout St. Louis County.

SPECIAL EDUCATION STUDENTS BY DISABILITY 2015-2016



Learning disabilities	20%
Other health impairment	20%
Speech impairment	16%
Autism	13%
Language impairment	8%
Emotional disturbance	7%
Intellectual disability	7%
Young child with a developmental delay	6%
Other	3%



"The highlight of my life was when SSD was established. The services SSD provides allows so many children to have successful lives."
— Josephine Piazza Milton, one of the founders of SSD

Webster Groves and SSD

By the Numbers

In all school districts on any given day, student counts may vary. For consistency, the information below is the student core data provided to the Missouri Department of Elementary and Secondary Education (DESE) for the Dec. 1, 2015, unduplicated child count.

Special Education Highlights

- ❖ **679 students** who live in **Webster Groves School District** receive services from SSD
- ❖ Total includes **542 students** who attend partner district schools/sites and **12 students** educated at SSD special education schools

SSD also provides a range of other services to students who live in the Webster Groves School District, including:

- ❖ **Early Childhood Special Education (ECSE)** services for young children ages 3 to 5 years;
- ❖ **Homebound Instruction** for students who, for a range of reasons including illness or injury, are unable to attend school in a traditional school setting;
- ❖ **Special Non-public Access Program (SNAP)**, in which SSD teachers provide after-school special education services to students who attend private or parochial schools; and
- ❖ **Courts Program**, in which SSD teachers provide special education and general education to youths who have been placed at the St. Louis County Juvenile Detention Center or Lakeside Center through a court order.

Career Technical Education (CTE) Highlights

- ❖ **11 students** who live in **Webster Groves School District** receive CTE at South Technical High School
- ❖ Students are enrolled in **8 different CTE programs**, including Cosmetology and Health Sciences

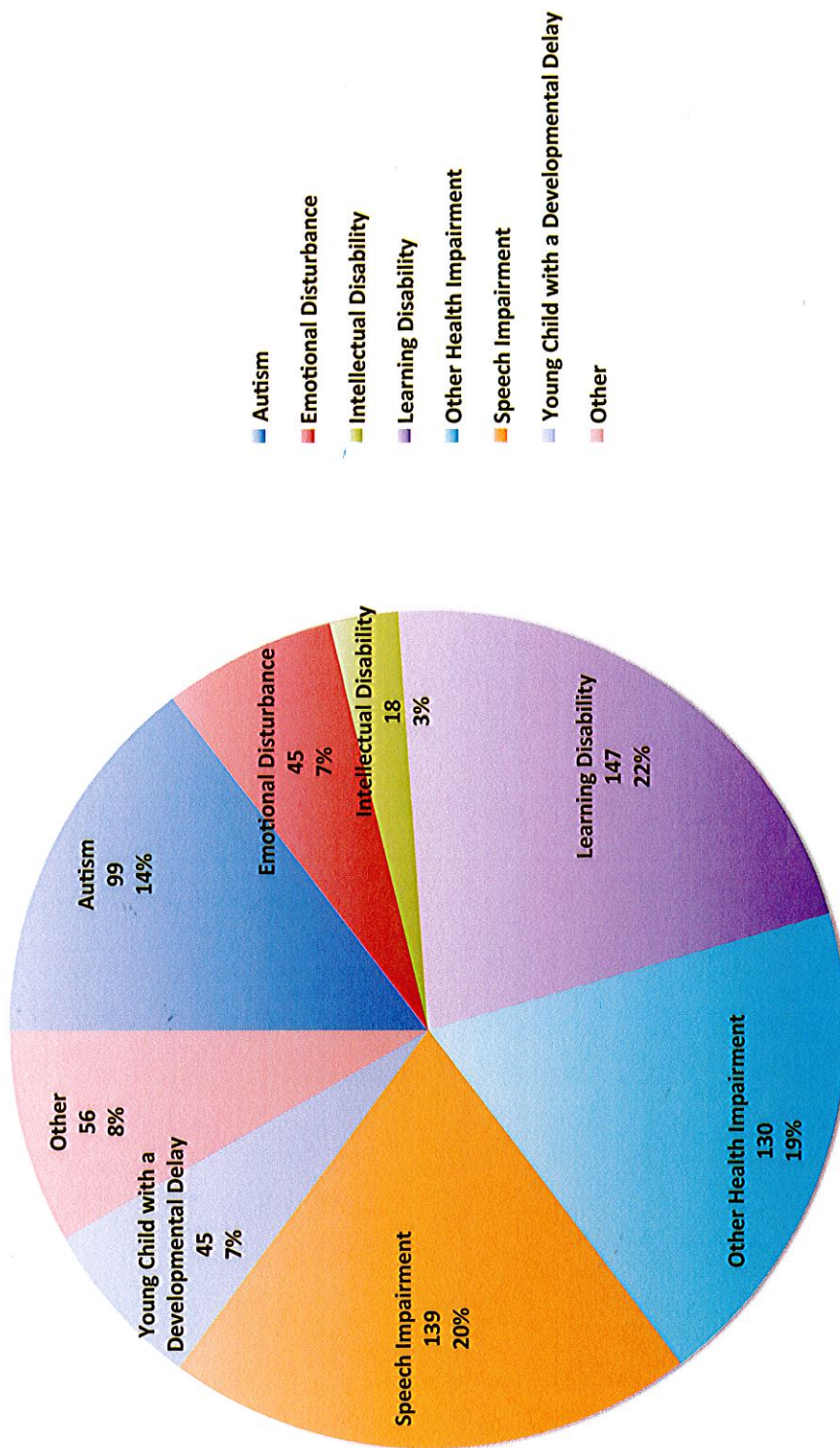
Webster Groves School District Enrollment (K-12)

- ❖ **4,438 students** Dec. 1, 2015 (DESE)

Webster Groves School District

Disability by Category

Students/Percent
Dec. 1, 2015





SSD Board of Education

2015-2016 Priorities

The SSD Board of Education established the following strategies and initiatives as Board of Education priorities for 2015-2016. The sequence and number do not necessarily indicate order of priority.

Priority 1

- Implement new state Educator Evaluation System (EES) framework for teachers.

Source: Comprehensive School Improvement Plan (CSIP) objective 2.2.1

Priority 2

- Develop a process to identify and address equitable access to special education programs and services across the District.

Source: Comprehensive School Improvement Plan (CSIP) objective 8.2.1

Priority 3

- Develop a process to ensure that staffing in all partner districts is equitable relative to teacher quality components including education, experience, mobility, certification, and performance.

Source: Comprehensive School Improvement Plan (CSIP) objective 8.2.2

Priority 4

- Implement operational audit recommendation to develop a standard operational framework for partnership agreements between SSD and partner districts.

Source: Comprehensive School Improvement Plan (CSIP) objective 8.3.1

Priority 5

- Pilot partner district management models and expand models that are shown to be effective.

Source: Comprehensive School Improvement Plan (CSIP) objective 8.3.3

Priority 6

- The administration may wish to determine if Career Technical Education (CTE) programs for students with disabilities may be expanded.

Source: Equity Study Recommendation 9.3

Priority 7

- Continue to implement Minority-owned Business Enterprise (MBE) and Women-owned Business Enterprise (WBE) vendor participation as designed and continue to monitor for construction projects and develop an annual report to be submitted to the Superintendent.

Source: Equity Study Recommendation 10.2